

**PVRHSD**

# Guidance/ School Counseling Newsletter

**Fall  
2018**

## ***In this Issue:***

## ***Page #***

College Visits at PH & PV for Juniors & Seniors	2
Seniors: Early Decision & Early Action	3
College Fairs	4
Guidance Programs (College Admissions and Financial Aid)	5
Naviance Login Information	6
Scholarship & Financial Aid Resources	6
Testing Information	7





## ATTENTION JUNIORS AND SENIORS

More than 100 colleges will visit Pascack Hills &  
Pascack Valley High Schools this fall.

For a complete listing please log on to your  
Naviance account for dates and times of these visits.

Visits begin on September 13th. Please be sure to adhere to the following  
protocol when signing up for a college visit:

- Students **MUST** sign up in Naviance by 3:30 PM the day prior to the scheduled visit. (*Log into Naviance, click on the "colleges" tab, and click on "view all upcoming college visits" to sign up*).
- Students are responsible for informing their teachers of the scheduled visit at least 1-day prior.

www.collegeboard.org suggests:

## **Seniors:** **Early Decision & Early Action** **What Are They and Are They Right for You?**

Have you noticed a new buzz word in your school hallways or counselor's office? "I'm applying early decision." "Will I be notified early?" Has all this early talk gotten you prematurely anxious about applying to colleges?

### **The Early Bird Gets the Worm**

This cliché is the basic concept behind early decision and early action plans. Your "worm" is knowing in December whether or not you've been accepted at your first choice college. Then, hopefully, you can enjoy the rest of your senior year without stressing about getting into college. The "worm" for the colleges that offer these plans is locking in students early in the process who really want to go to the school.

### **Early Decision vs. Early Action**

Early decision plans allow you to apply early (usually in November) and get an admission decision from the college well in advance of the usual notification date. But there is a catch. Early decision plans are "binding," meaning if you apply as an early decision candidate, you agree to attend the college if it accepts you and offers an adequate financial aid package. Although you can apply to only one college for early decision, you may apply to other colleges under regular admission. If you're accepted by your first-choice college early, you must withdraw all other applications. Usually, colleges insist on a nonrefundable deposit well in advance of May 1.

Early action plans are similar to early decision plans in that you can learn early in the admission cycle (usually in January or February) whether a college has accepted you. But unlike early decision, most early action plans are not binding, meaning you do NOT have to commit to a college to which you've applied for early action. Under these plans, you may apply to other colleges under regular admission plans, but some stipulate that you may not apply early (either early decision or early action) to other colleges. Usually, you can let the college know of your decision in the late spring or when you've decided.

### **Should I Apply Under One of These Plans?**

You should apply under an early decision or action plan only if you are very, very sure of the college you want to attend. These plans make a lot of sense if one college is your clear preference and if your profile closely matches that of the students at that college.

Do not apply under an early decision or action plan if you plan to weigh offers and financial aid packages from several colleges later in the spring. Also, you shouldn't apply early if it is to your advantage to have more of your senior year work to show a college. If you plan to woo an admission office with your excellent grades this year, you may want to wait until after the semester ends to apply to colleges.

### **Who Offers Early Plans?**

More than 400 colleges offer an early decision plan, an early action plan, or both. Go to a [list of these colleges](#) @ collegeboard.org for their deadlines, and the number of students who applied and were accepted under an early decision plan. You can also find this information in The College Board *College Handbook*, available in the online store.

### **Do Your Research**

Before applying to an early action and early decision plan, research all your options to decide which college is the right one for you. Does the college have everything you want in a school? You can use [College Search](#) to find schools that match your preferences.

### **A Last Word of Advice**

Get advice from your high school counselor and other trusted advisers before applying to a college as an early decision applicant. In the fall, it may seem appealing to get the college decision over with, but as your senior year progresses, you may find your academic and other goals changing. On the other hand, you may be very confident that you will thrive at a certain college. If so, you're the type of student for which early decision was created.

# COLLEGE FAIRS

4



## Pascack Valley & Northern Valley College Night

Thursday, October 18, 2018  
7:00-9:00pm  
Northern Valley Old Tappan High School



## Fall 2018 Local and Regional College Fair Schedule

Location	Date	Time	Site
<b>Bergen County Directors of Guidance College Fair</b>	Thurs. Sept. 20	7p.m. - 9p.m.	FDU—Rothman Center Hackensack, NJ
<b>Long Island National Fair</b>	Sun. Sept. 23	11a.m.-3 p.m.	Suffolk Community College Selden, NY
<b>Atlantic City</b>	Thurs. Nov. 1	9a.m.-12:00p.m. 6p.m.-8:00p.m.	Atlantic City Convention Center Atlantic City, NJ

# The Admissions Game

An Interactive and Proactive Presentation on the  
Selective College Admissions Process

Featuring  
Peter Van Buskirk

Author, lecturer and former Dean of Admissions at Franklin & Marshall College

*9th, 10th and 11th Grade Students & Parents*

Thursday, October 25, 2018

7:00 p.m.

Pascack Hills High School Auditorium



**FINANCIAL  
AID  
NIGHT**



October 4, 2018

Pascack Hills

High School Auditorium

7:00 p.m.

Guest Speaker:

Jim Anderson, Director  
of Financial Aid

Montclair State University

# NAVIANCE

All students login with their laptop username and password.

LAPTOP  
USERNAME:  
Ex (scasamento)

LAPTOP  
PASSWORD  
Ex: (ab123)

Visit your Naviance account @ [www.connection.naviance.com/phhs](http://www.connection.naviance.com/phhs)  
10th, 11th and 12th Grade Students: Get your updated GPA under student profile.

## Scholarship and Financial Aid Resources

Free Application for Federal Student Aid (FAFSA) [www.fafsa.ed.gov](http://www.fafsa.ed.gov)

Higher Education Student Assistance Authority [www.hesaa.org](http://www.hesaa.org)



[www.fastweb.com](http://www.fastweb.com)

[www.findaid.com](http://www.findaid.com)

[www.college-scholarships.com](http://www.college-scholarships.com)

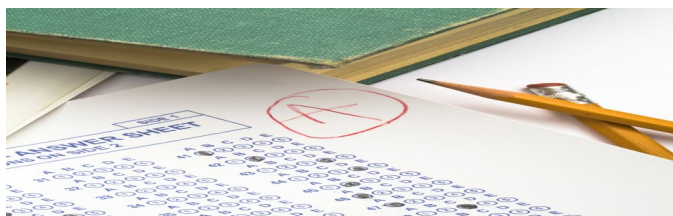
CSS/Financial Aid PROFILE <https://profileonline.collegeboard.com>

# TESTING INFORMATION

## U.S. Registration Deadlines

2018-2019 Test Dates	Test	Regular Registration Deadline (postmark/submit by)
August 25, 2018	SAT & Subject Tests	July 27, 2018
October 6, 2018	SAT & Subject Tests	September 7, 2018
November 3, 2018	SAT & Subject Tests	October 5, 2018
December 1, 2018	SAT & Subject Tests	November 2, 2018
March 9, 2019	SAT only	February 8, 2019
May 4, 2019	SAT & Subject Tests	April 5, 2019
June 1, 2019	SAT & Subject Tests	May 3, 2019

Go to [www.collegeboard.com](http://www.collegeboard.com) to register!



## CEEB CODES

PASCACK HILLS **310-823**

PASCACK VALLEY **310-540**

## ACT

Go to [www.actstudent.org](http://www.actstudent.org) to register!

Test Date	Registration Deadline	<i>(Late Fee Required)</i>
September 8, 2018	August 10, 2018	August 11-26, 2018
October 27, 2018	September 28, 2018	September 29—October 14, 2018
December 8, 2018	November 2, 2018	November 3-19, 2018
February 9, 2019	January 11, 2019	January 12-18, 2019
April 13, 2019	March 8, 2019	March 9-25, 2019
June 8, 2019	May 3, 2019	May 4-20, 2019
July 13, 2019	June 14, 2019	June 15—24, 2019